

# Alaska Department of Fish and Game

Habitat Section  
Southeast Region



## 186-15-10550-2005-3002 Tributary 1

## ADDITION

**Water body name:**

**Survey date:** 8/20/2024

**Quad:** Icy Bay D2, D3

**Species & Lifestage:**

**Upper Reach Latitude:** 59.987329 **Longitude:** -141.522591

**Survey crew:** NJ, CD, FC

**Lower Reach Latitude:** 59.985584 **Longitude:** -141.530905

**Findings:** We surveyed this uncataloged stream using a backpack electrofisher, baited minnow traps, and GPS and captured juvenile coho salmon and sculpin. This tributary is a ditch that parallels the north side of the road and flows west. Further investigation is recommended to find the upper extent and to verify if this stream has a confluence with Carson Creek (Table 1; Figures 1–3).

**Recommendations:** Add this uncataloged stream to the anadromous waters catalog for rearing coho salmon (Figure 4).

**Nomination:** Pending

Table 1.–186-15-10550-2005-3002 tributary 2 survey data.

Waypoint	Latitude	Longitude	Notes	Stream Width ft	Stream Substrate	Habitat Features	Gradient %	Sample Effort	Sample Results
608	59.985564	-141.530826	Several CO visually seen. Will check beyond 200 ft point to see if stream and fish presence continue. Lots of small gravels. Forks at bridge where one channel heads up and other parallels road.				1-2	VI	2 CO
609	59.985887	-141.530119	Another bridge. Channel that paralleled road joins another channel and goes under bridge. CO visually seen but set trap as well. Bridge is mostly collapsed but has some water flowing underneath. Lots of built up sediment. Trap above bridge.				2-4	MT	13 CO
610	59.986857	-141.524587	Smooth wall pipe may be velocity barrier. Scour pool at outlet . Upstream channel makes sharp turn and parallels road. Two traps set, one outlet and inlet. Water downstream ponds up after slowing down leading to deposition. Banks of road show some erosion, mostly at outlet. Debris in inlet could also be barrier, water drops about 6-8 inches. CO captured upstream of pipe.				2-4	MT	6 CO 2 SC
1044	59.986956	-141.524153	24 inch smooth wall pipe with little flow at outlet. Inlet of pipe cannot be found, but is likely covered by sediment, buildup or woody debris, but still allows a small amount of water flow through the pipe. Extend the ditch to the next channel.		Small Gravel		1-2	VI	3 CO
1046	59.987137	-141.523637	Coho caught in pool just upstream of the bridge and others visually seen. The ditch further west continues up through this point and continues going east. Only small amount of water falling under the bridge to low water levels.		Small Gravel		1-2	EF	2 CO



Figure 1.—Upstream at waypoint 1046.



Figure 2.—Downstream at waypoint 1044.



Figure 3.—Juvenile coho salmon caught at waypoint 609.

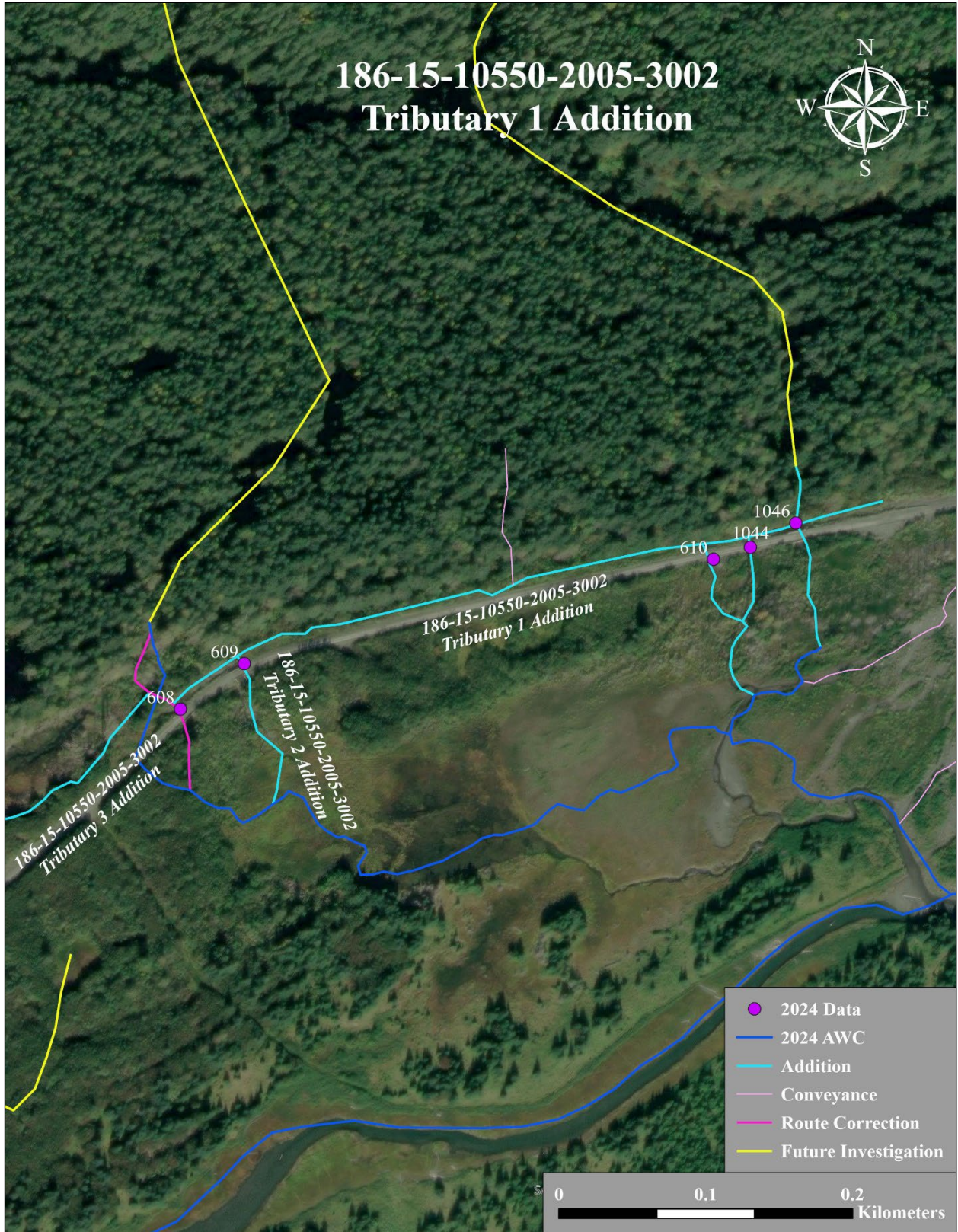


Figure 4.—186-15-10550-2005-3002 tributary 1 addition map.